

SILOS
SPAIN

PROJECTS I **GRAIN TERMINALS**





Under construction NKF - IRAN: 48 silos mod. 24,45/17 - Total capacity : 367.000 T

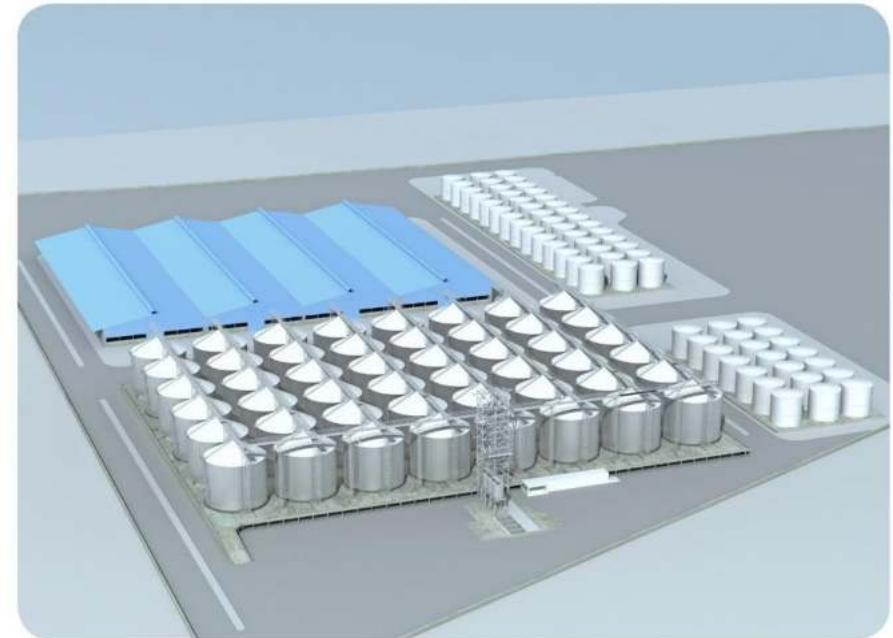
Under construction | NKF Irán

Plant conceived for the storage of soya bean, corn and wheat.

The total capacity of the plant is 489.792 m³ for the storage of 367.000 T of cereal.

The project includes:

- ✓ 48 silos model 24.45/17 of 10.204 m³ capacity each.
- ✓ Intake conveying capacity: 1.200 T/h (600 T/h double).
- ✓ Discharge capacity: 800 T/h (400 T/h double).





2018 PORT OF ANTWERP - BELGIUM: 37 hopper silos 45° mod. 07,64/16
Total capacity: 25,750 T

2018 | Port of Antwerp Belgium

Grain terminal conceived for the storage of malt and barley.

The total capacity of the plant is 34.336 m³ for the storage of 25.750 T of cereals.

The project includes:

- ✓ 37 hopper silos model 07.64/16 45° of 928 m³ capacity each.
- ✓ New reinforced silo design for high grain transfer and flow rates, up to 400 T/h.
- ✓ Accessories to preserve the quality of grain: ventilation, temperature control system, level sensors, etc.
- ✓ Structures that are fully adapted to the project needs: stair tower, wide catwalks and different types of supports.
- ✓ Turn-key project entirely made by Silos Cordoba.





2015 OBRINEL - URUGUAY: 12 silos mod. 27,50/17 - Total capacity: 121.000 T

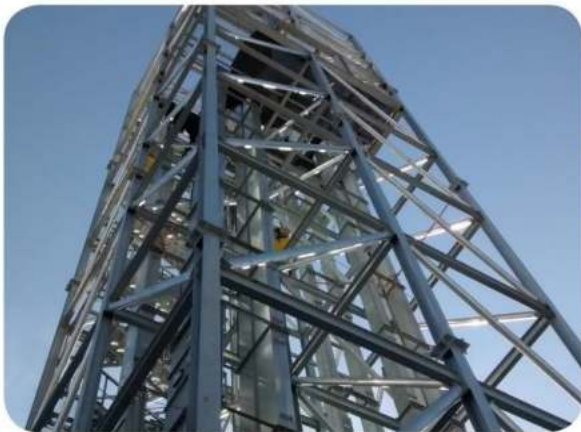
2015 | Obrinel Uruguay

Planta conceived for the storage of wheat at Montevideo Port.

The total capacity of the plant is 161.312 m³ for the storage of 121.000 T of cereal.

The project includes:

- ✓ 12 silos model 27.50/17 of 13.083 m³ capacity each.
- ✓ 1 hopper silo model 10.70/16 45° of 1.893 m³ capacity each.
- ✓ 2 hopper silos model 5.35/6 60° of 194 m³ capacity each.
- ✓ 2 hopper silos model 8.40/13 45° of 944 m³ capacity each.
- ✓ 1 truck load silo model 4.65/6 60° of 147 m³ capacity each.
- ✓ Central handling tower of 9,3 X 9,3 X 45m height.
- ✓ Secondary central handling tower of 9 X 7 X 28m height.
- ✓ Weighting area 12 X 6,5m.
- ✓ Loading and unloading is done at 800 T/h.
- ✓ It includes as well a truck dumper platform, conveyors, bucket elevators and accesories.





2015 AKT - KAZAKHSTAN: 6 silos mod. 27,50/18 - Total capacity: 62.000 T

2015 | AKT azakhstan

Plant focused on the storage of maize at Aktau Port. This plant is conceived for the storage and expedition at bulk carriers. The collection of maize on this plant is done through train. The total capacity of the plant is 82.560 m³ for the storage of 62.000 T of cereal.

The project includes:

- ✓ 6 flat silos model 27.50/18 of 13.760 m³ capacity each.

The storage plant can be divide into three main areas of work:

- ✓ Reception of cereals at 500 T/h.
- ✓ Storage of cereals.
- ✓ Dispatch of cereal from silos to ship at 500 T/h through a ship loader.

The facility has as well:

- ✓ Dust aspiration system in intake pit and handling equipment.
- ✓ Pre-cleaner system.
- ✓ Electrical pannel with PLC and SCADA.
- ✓ Lightning system.
- ✓ Fire extinguishing systems.
- ✓ Water drainage.
- ✓ Weighting system using a continuous flow scale of 500 T/h.

Erection and commissioning has been done by Silos Cordoba Kazakhstan.





2013 TIRYAKI - TURKEY: 19 silos mod. 18,33/22 – 11 silos mod. 14,51/22 –
27 truck load silos mod. 4,65/6 – 6 silos mod. 21,39/22 – Total capacity: 200.000 T

2012 | Tiryaki Turkey

Project conceived for the storage of wheat and canola.

The total capacity of the plant is 250.168 m³ for the storage of 200.000 T of cereal.

The project includes:

- ✓ 19 silos model 18.33/22 of 7.110 m³ capacity each.
- ✓ 11 silos model 14.51/22 of 4.395 m³ capacity each.
- ✓ 27 truck loading silos mod. 4.65/6 of 147 m³ capacity each.
- ✓ 4 45° conic silos model 9.17/12 of 1.063 m³ capacity each.
- ✓ The conveying machinery has been delivered by Silos Cordoba.
- ✓ Loading and unloading is done at 300 T/h.





2009 CONSTANZA - ROMANIA: 17 silos mod. 24,45/22 – Total capacity: 165.000 T

2009 | Constanza Romania

Plant conceived for the storage of wheat, barley, rape, corn, sunflower...

The total capacity of the plant is 218.960 m³ for the storage of 164.000 T of cereal.

The project includes:

- ✓ 17 silos model 24.45/22 of 12.880 m³ capacity each.
- ✓ Filling up is done at 1.200 T/h





2007 BAKU - AZERBAIJAN: 5 silos mod. 16,81/14 – Total capacity: 15.000 T

2007 | Baku Azerbaijan

Plant for the receipt of ships with two slip extractors with a capacity of 300 tn, transfer belt to silos and filling up system. The total capacity of the plant is 19.627 m³ for the storage of 14.500 T of cereal.

The project includes:

- ✓ Manufacture and assembly of 5 flat silos model 16.81/14 of 3.901 m³ capacity each.
- ✓ Continuous flow scale at the entry and at the expedition from silos to railroad and trucks.
- ✓ The project includes as well ventilation and temperature monitoring systems and clearing machines.
- ✓ Regarding conveying systems, Silos Córdoba provides two belt conveyors, two bucket elevators and five chain conveyors.





SILOS
SPAIN



Our Office

C/Gobelas, 15
28023 Madrid
Spain



Our Manufacturing Plant

C/Astronauta Pedro Duque
29320 Campillos, Málaga
España



Get in Touch

silos@silospain.com
(034) 606 80 17 22
(034) 924 75 00 08

www.silospain.com