



HOMES



Quinta Metálica, part of the Silos Córdoba Group, was founded over 10 years ago and specializes in supplying metal panelling and other elements for architectural projects.

When we first started out, our hallmark was definitely our bespoke service which made our brand a unique and innovative option.

However, one of our founding principles was to industrialize the company and this has enabled us to make all our ideas more widely accessible without losing our original essence.

We offer architectural solutions that range from standard to exclusive, from prêt à porter to haute couture.

With our industrialized construction system you can tackle any architectural project, regardless of its type or location.

The optimization and high performance of our material and human resources helps to considerably improve costs and timings compared to traditional construction methods.

We take enormous care over all the construction details and the choice of materials, proposing the most suitable manufacturing process for each individual project:

- STRUCTURAL SUPPORTS
- 3D BLOCKS
- CUSTOMIZED MODULES



INDUSTRIALIZED IDEAS

STRUCTURAL SUPPORTS



AN INTERMEDIATE PHASE BETWEEN TRADITIONAL AND PREFABRICATED CONSTRUCTION is represented by the use of our structural support system.

Using top quality steel (galvanized Z600) we plan, itemize and produce tailor-made structural profiles for your projects.

Our construction clients responsible for developing major mass-produced structures find that this product perfectly fulfils their demand for flexibility and uniformity.



3D BLOCKS



CONSTRUCTED AT THE PLANT, INSTALLED AND COMPLETED ON SITE

Our 3D modules comprise a self-supporting structure followed by the walls and façades, the joinery, floors and ceiling, and all the necessary installations: electricity, drainage, plumbing, etc.

Everything is constructed at the industrial plant where there are various sequential production lines in constant operation. The 3D blocks must be easy to handle with dimensions suitable for transportation.

Apart from the odd exception, our scope is nationwide.



CUSTOMIZED MODULES

Towns and cities are shaped by an arrangement of open, public spaces which encourage socialization and by private spaces for individual family units.

A home is more than just a private space: it is a place where people congregate, somewhere that should help to eradicate isolation and inequality, a place to remove barriers instead of creating them.

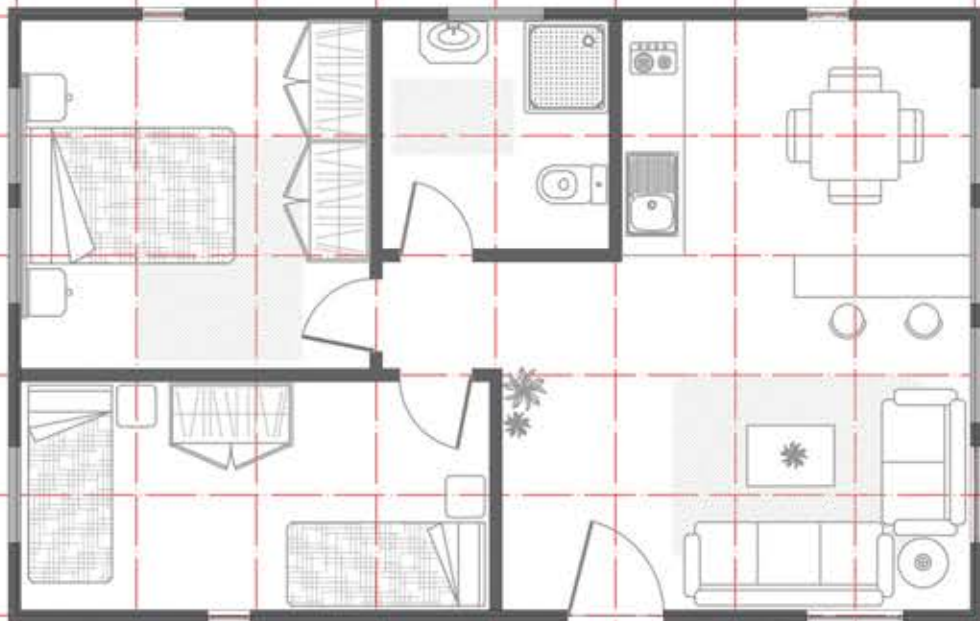


"NOTHING IS STRONGER THAN AN
IDEA WHOSE TIME HAS COME".

Victor Hugo

... A PASSION FOR SOME,
A RIGHT FOR ALL...
ARCHITECTURE





AREA: 52M²

BUILD YOUR PROJECT

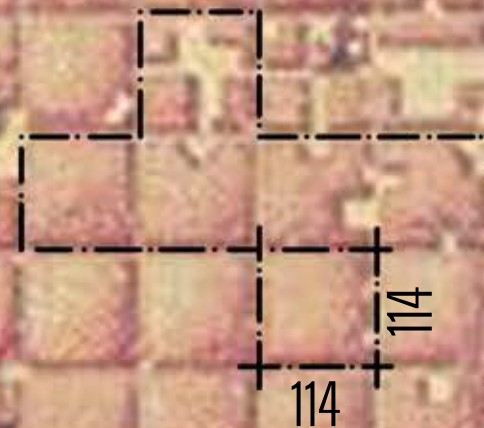
... FOLLOW THE GRID AND
PLAN YOUR OWN HOME...

"and when they plan the place, dividing it up into squares, streets and plots by strings and rulers, starting with the main square and branching out into streets to the main roads and gates, and leaving sufficient open space so that although the population may continue growing greatly, one can always progress and widen in the same way."

Ordinance of Carlos V, 1523

Along the same lines, the creation of a space should be able to adapt to any demand or need. A section of 114 centimetres which can be extended to north or south, to east or west, growing simultaneously with your family.

6,30 m²
7,80 m²
9,10 m²
10,40 m²
11,70 m²
13,00 m²
14,30 m²
15,60 m²
16,90 m²
18,20 m²
19,50 m²
20,80 m²
22,10 m²
23,40 m²
24,70 m²
26,00 m²
27,30 m²
28,60 m²
29,90 m²
31,20 m²
32,50 m²
33,80 m²
35,10 m²
36,40 m²
37,70 m²
39,00 m²
40,30 m²
41,60 m²
42,90 m²
44,20 m²
45,50 m²
46,80 m²
48,10 m²
49,40 m²
50,70 m²
52,00 m²
53,30 m²
54,60 m²
55,90 m²
57,20 m²
58,50 m²
59,80 m²
61,10 m²
62,40 m²
63,70 m²
65,00 m²
66,30 m²
67,60 m²



SUPPORT YOUR FUTURE ON OUR BASIC MODULE

Made from first-class materials, the module is emplaced and secured to the ground to ensure the foundations of your investment.

It provides protection from leaks, houses the thermal insulation, guides the water system and integrates perfectly in the whole.

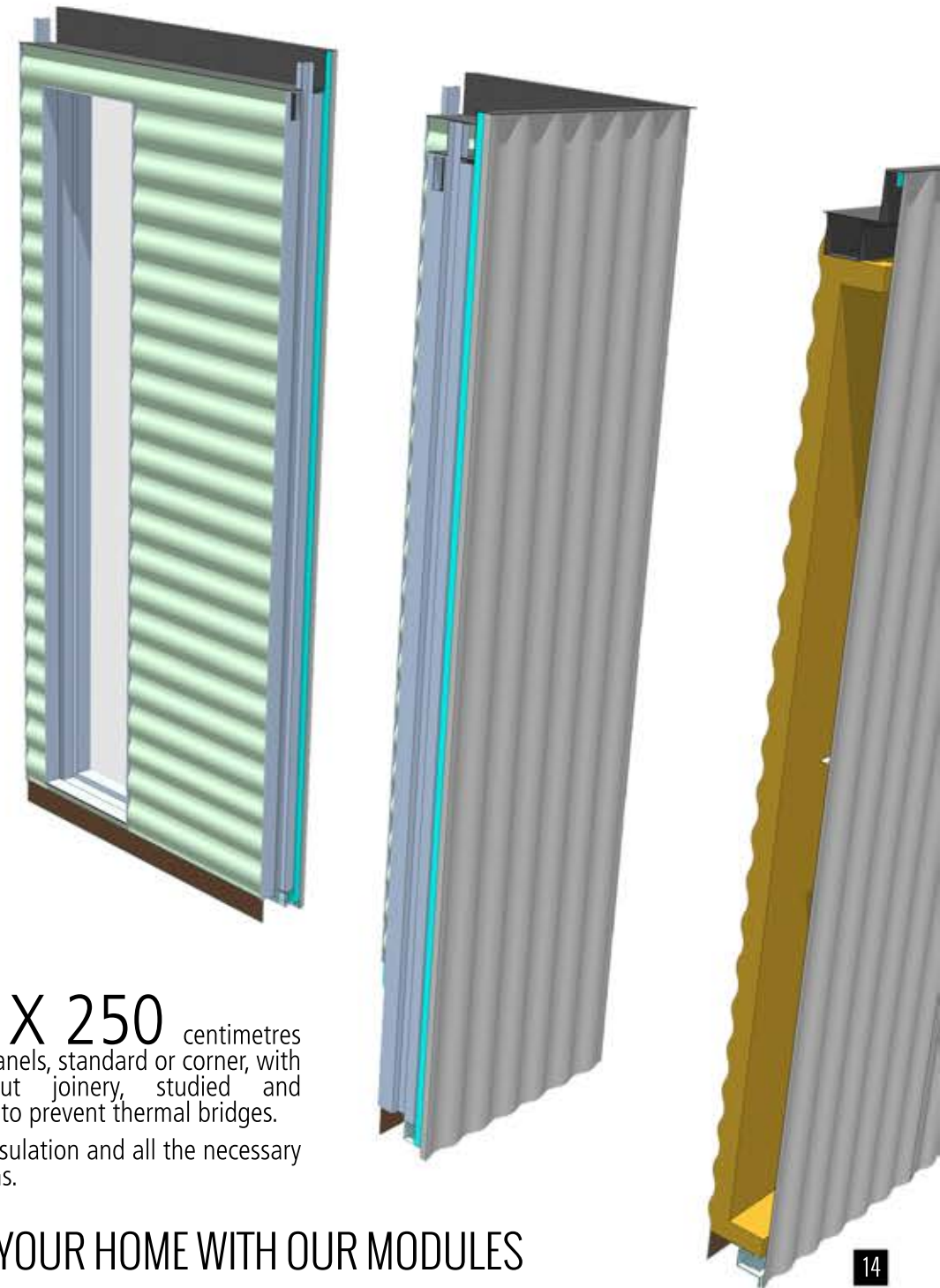
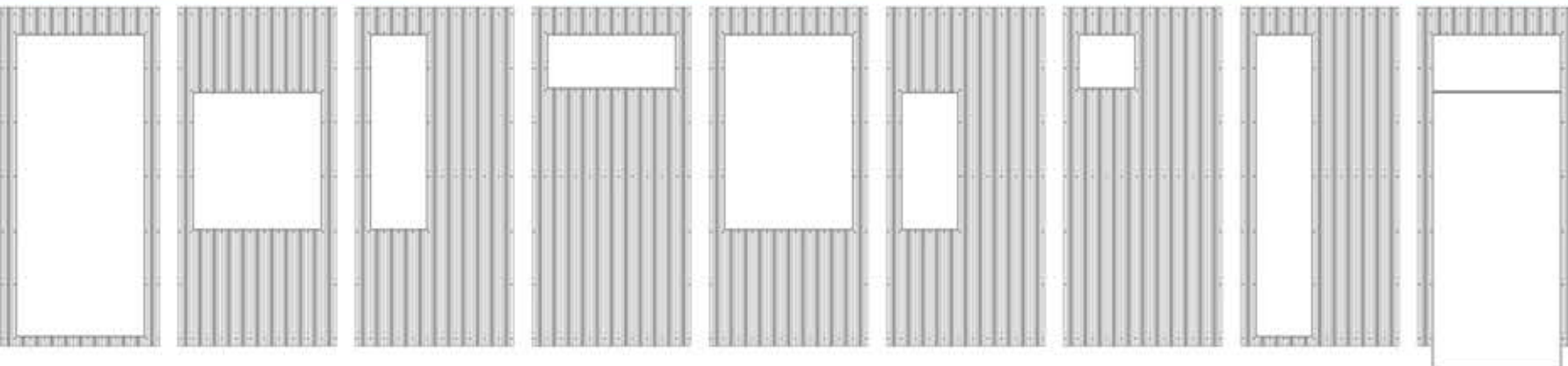
It guides the assembly process and accommodates our interconnecting columns and blocks.

STRENGTH AND RELIABILITY



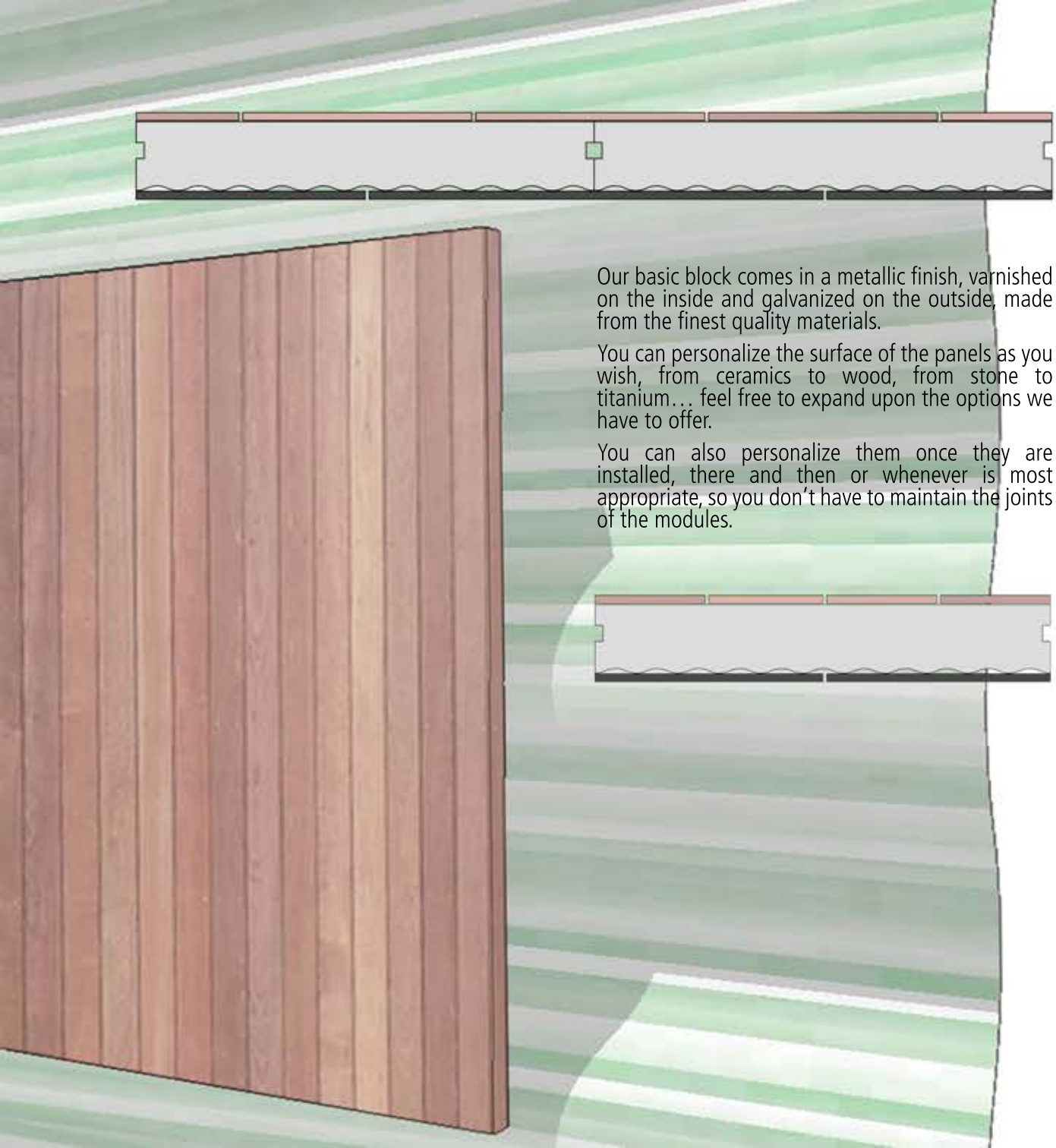


CUSTOMIZED MODULES



114 X 250 centimetres
of metal panels, standard or corner, with
or without joinery, studied and
developed to prevent thermal bridges.
Includes insulation and all the necessary
installations.

BUILD YOUR HOME WITH OUR MODULES



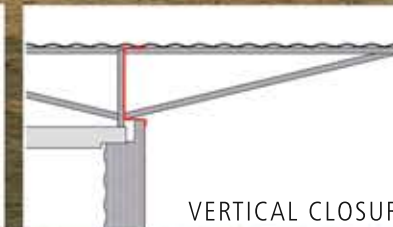
Our basic block comes in a metallic finish, varnished on the inside and galvanized on the outside, made from the finest quality materials.

You can personalize the surface of the panels as you wish, from ceramics to wood, from stone to titanium... feel free to expand upon the options we have to offer.

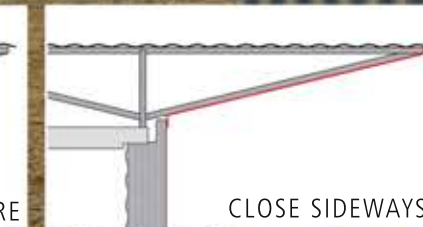
You can also personalize them once they are installed, there and then or whenever is most appropriate, so you don't have to maintain the joints of the modules.



WITHOUT CLOSING




VERTICAL CLOSURE



CLOSE SIDEWAYS



PERSONALIZE YOUR HOME



The whole house is topped off by a gently curving overhanging roof which provides a covered space around the whole perimeter of the dwelling.

Finished in your choice of metal, fixed in place by longitudinal girders, the roof protects the house from inclement weather, completes the overall aesthetic and lets you create semi-detached or terraced family housing while maintaining privacy.

PROTECTION





www.quintametalica.com

GRUPO SILOS CÓRDOBA

C/ Juan Bautista Escudero Parc. 273
P. I. Las Quemadas
14014 Córdoba
Spain
Tel. +34 918 961 898

